

**Paper Reference 1MU0/03**  
**Pearson Edexcel**  
**Level 1/Level 2 GCSE (9–1)**

**Music**  
**COMPONENT 3: Appraising**

**Wednesday 14 June 2023 – Afternoon**

**Data Booklet**

**In the boxes below, write your name,  
centre number and candidate number.**

|                             |  |  |  |  |  |  |  |  |  |  |
|-----------------------------|--|--|--|--|--|--|--|--|--|--|
| <b>Surname</b>              |  |  |  |  |  |  |  |  |  |  |
| <b>Other names</b>          |  |  |  |  |  |  |  |  |  |  |
| <b>Centre<br/>Number</b>    |  |  |  |  |  |  |  |  |  |  |
| <b>Candidate<br/>Number</b> |  |  |  |  |  |  |  |  |  |  |

## INSTRUCTIONS

**There may be spare copies of some data sheets in case you need them.**

**THIS DATA BOOKLET MUST  
BE RETURNED WITH THE  
QUESTION PAPER AT THE END  
OF THE EXAMINATION.**

# **Contents**

## **Page**

|              |                                      |
|--------------|--------------------------------------|
| <b>5</b>     | <b>Question 1(g)</b>                 |
| <b>6</b>     | <b>Question 3(a)</b>                 |
| <b>7</b>     | <b>Question 3(c)</b>                 |
| <b>8</b>     | <b>Question 5(e)</b>                 |
| <b>9–10</b>  | <b>Question 6(a) – Extract A</b>     |
| <b>11</b>    | <b>Question 6(b)</b>                 |
| <b>12–13</b> | <b>Question 7</b>                    |
| <b>14–16</b> | <b>Question 7 – Manuscript paper</b> |
| <b>17–18</b> | <b>Question 8</b>                    |

**(continued on the next page)**

**Turn over**

**Contents continued.**

**Spare Copies**

**19            Question 3(a)**

**20            Question 3(c)**

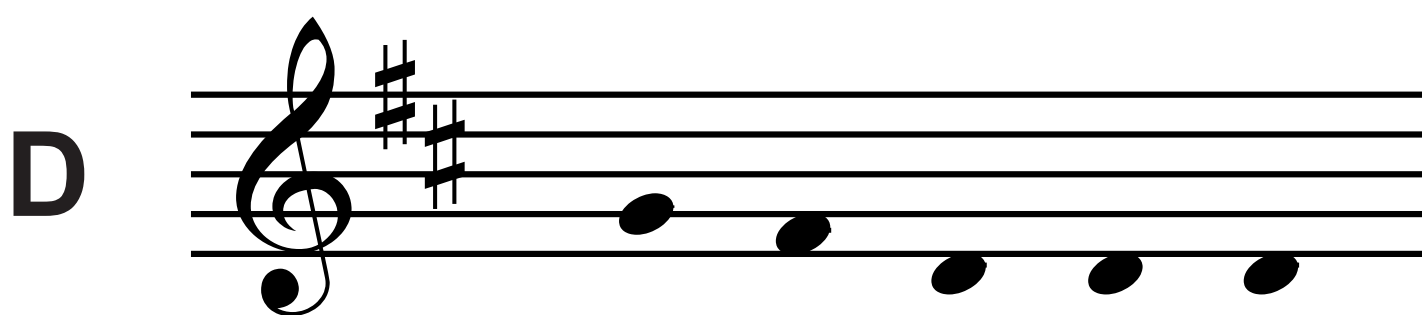
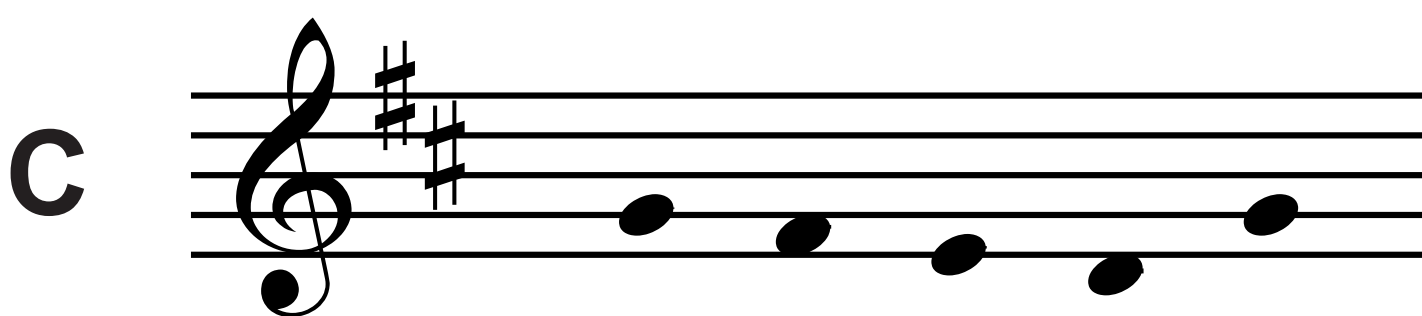
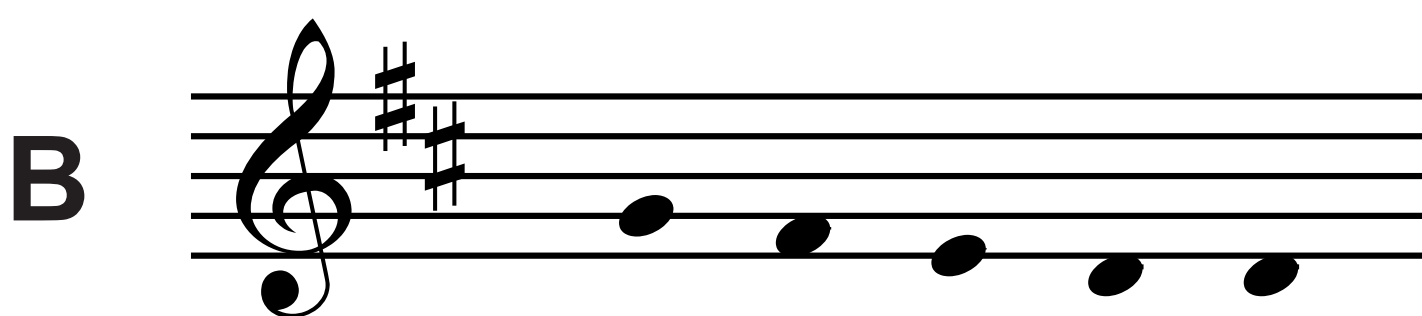
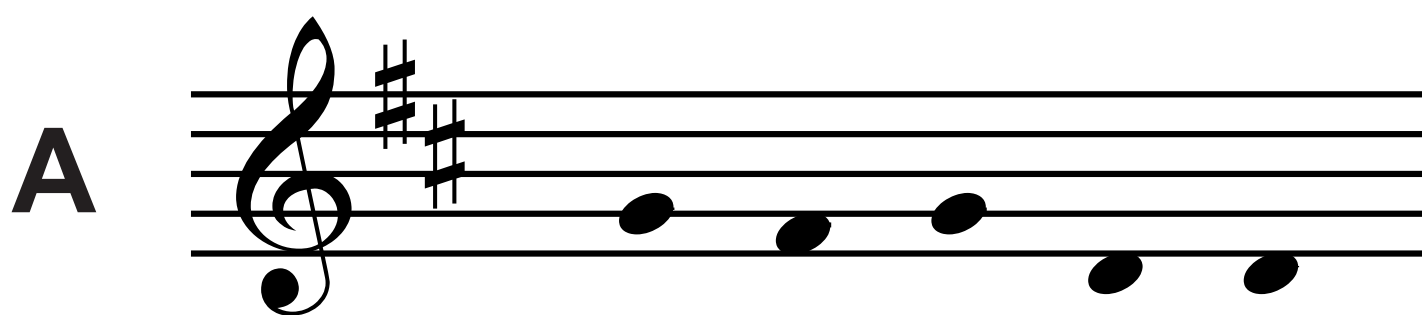
**21            Question 6(a) – Table**

**22            Question 6(b)**

**23–24        Question 7**

**25–27        Question 7 – Manuscript paper**

Question 1(g)



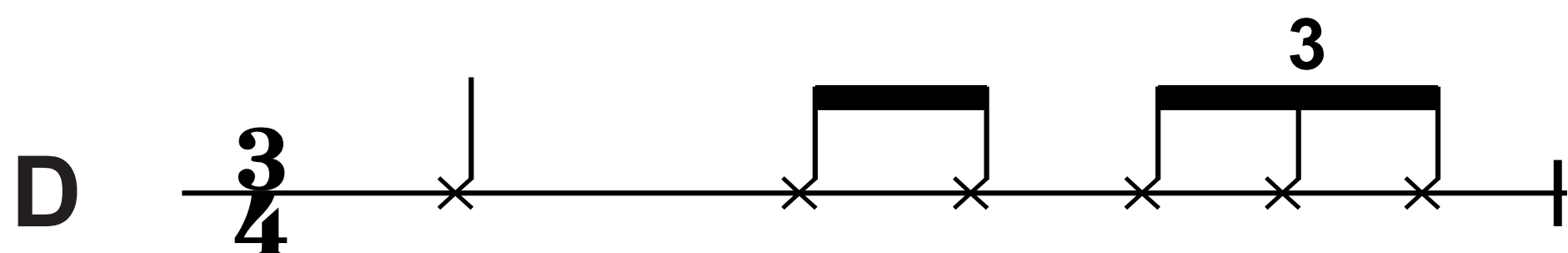
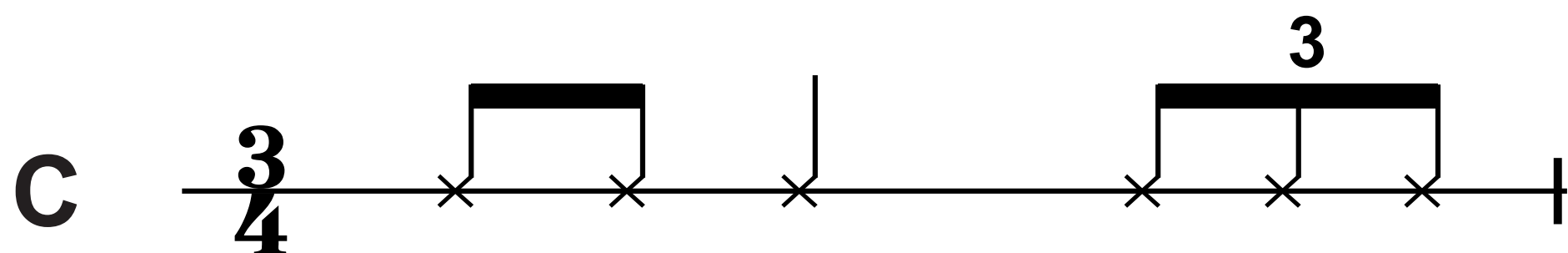
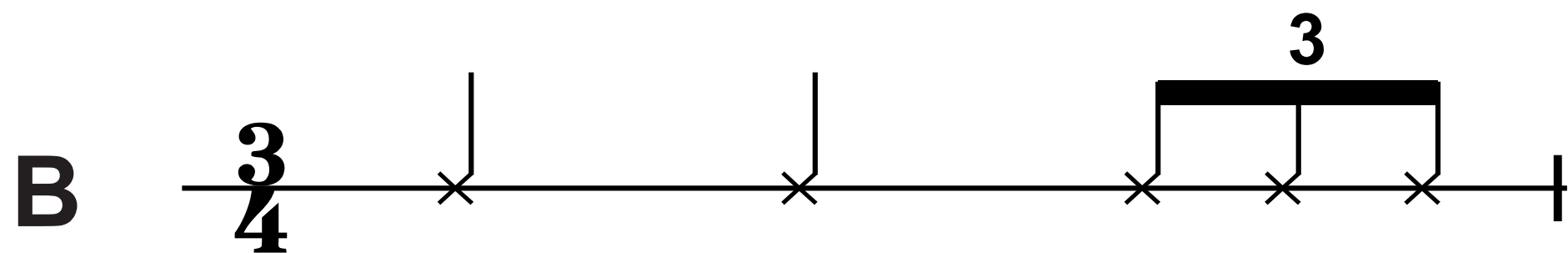
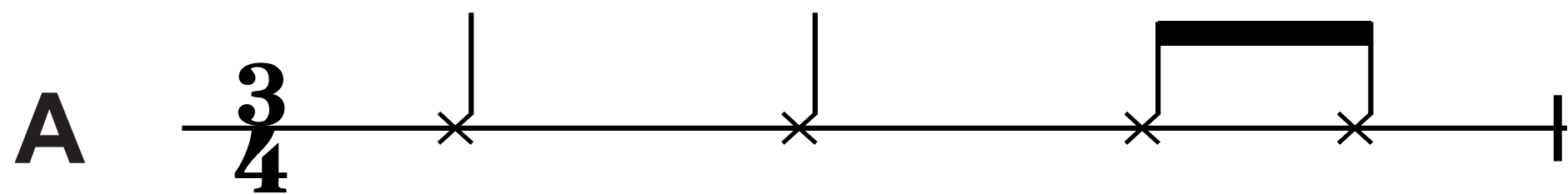
Question 3(a)

| Statement                                | True                     | False                    |
|--|--------------------------|--------------------------|
| A The opening vocal melody is chromatic  | <input type="checkbox"/> | <input type="checkbox"/> |
| B The opening vocal melody is melismatic | <input type="checkbox"/> | <input type="checkbox"/> |

Question 3(c)

|                                       |               |
|---------------------------------------|---------------|
|                                       | <b>Rhythm</b> |
| <b>acoustic bass guitar</b>           |               |
| <b>second accompanying instrument</b> |               |

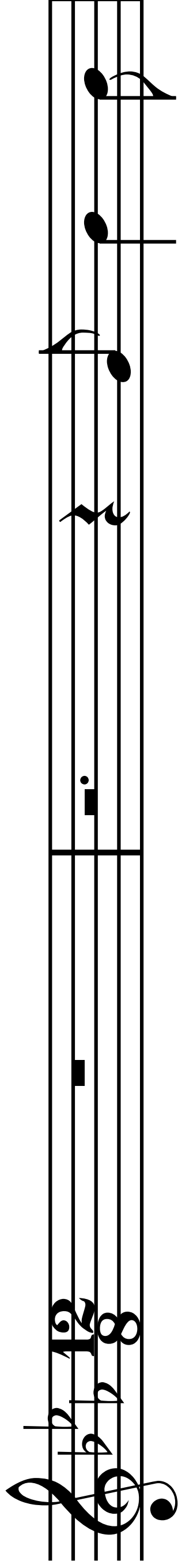
Question 5(e)





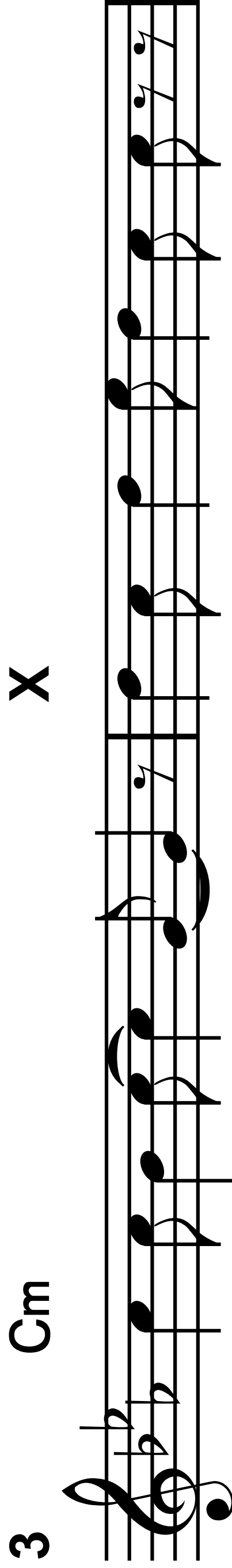
Question 6(a) – Extract A

12 8



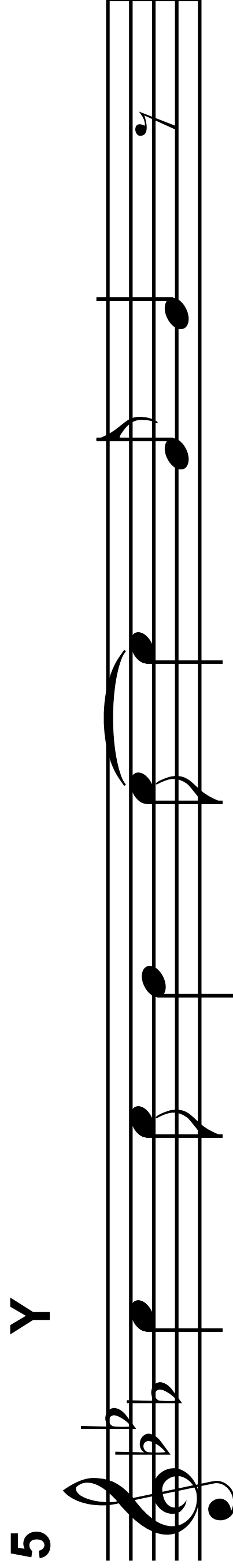
She keeps a

3 Cm X



Mo-ët et Chan-don- in her pret-ty ca-bi-net.

5 Y

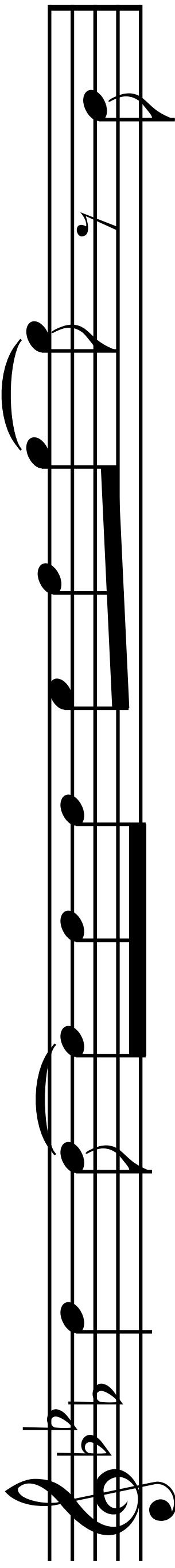


'Let them eat cake,' she says,

(continued on the next page)

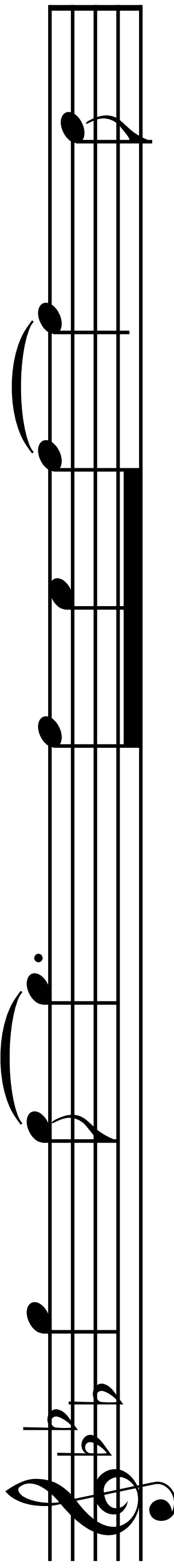
Turn over

6



just like— Ma - rie An - toi - nette. A

7



built - in— re - me - dy— for

Question 6(b)

| Similarities | Differences |
|--------------|-------------|
| 1            | 1           |
| 2            | 2           |

Question 7

**Allegretto**

Musical notation for the first system, featuring a treble clef, a key signature of two sharps (F# and C#), and a 4/4 time signature. The notation includes a series of notes and rests, with a final measure containing a fermata.

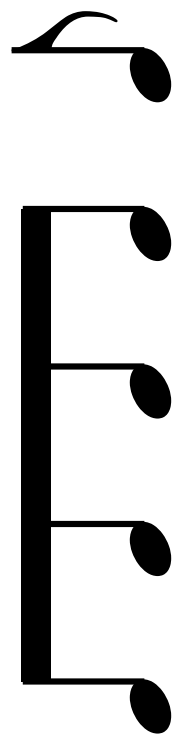
Musical notation for the second system, continuing the piece. It features a treble clef, a key signature of two sharps (F# and C#), and a 4/4 time signature. The notation includes a series of notes and rests, with a final measure containing a fermata.

(continued on the next page)

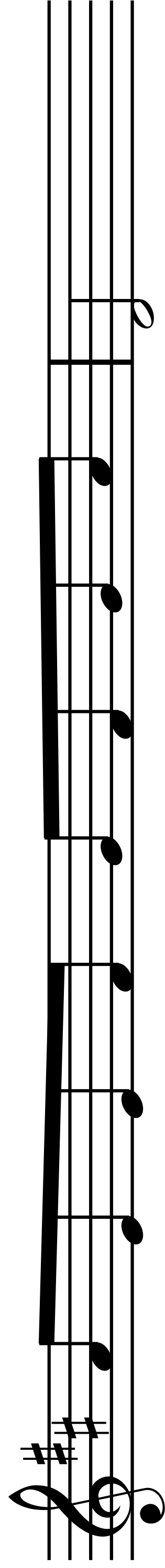
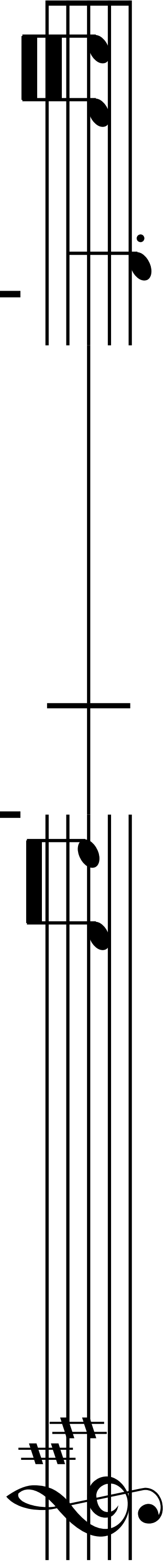
Turn over

Question 7 continued.

(a) melody?



(b) rhythm?





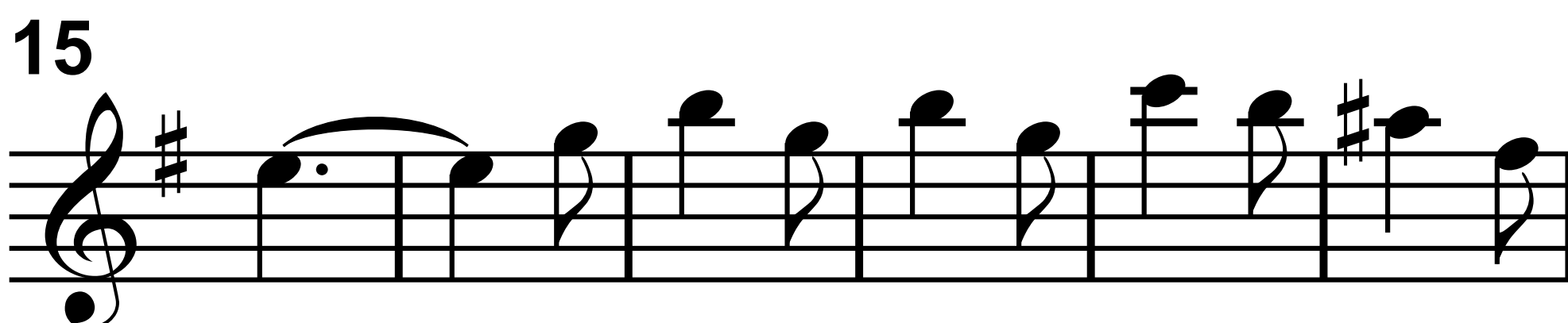
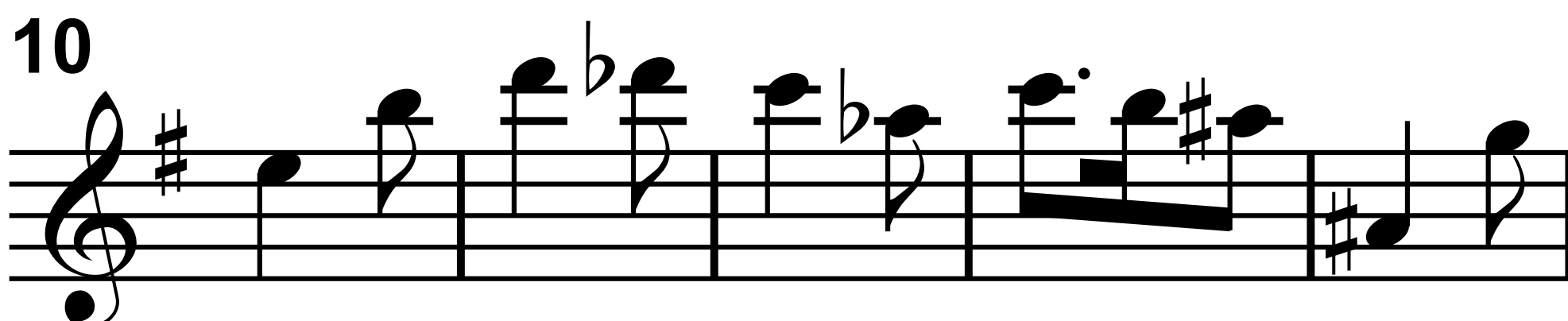






(b) instrument?

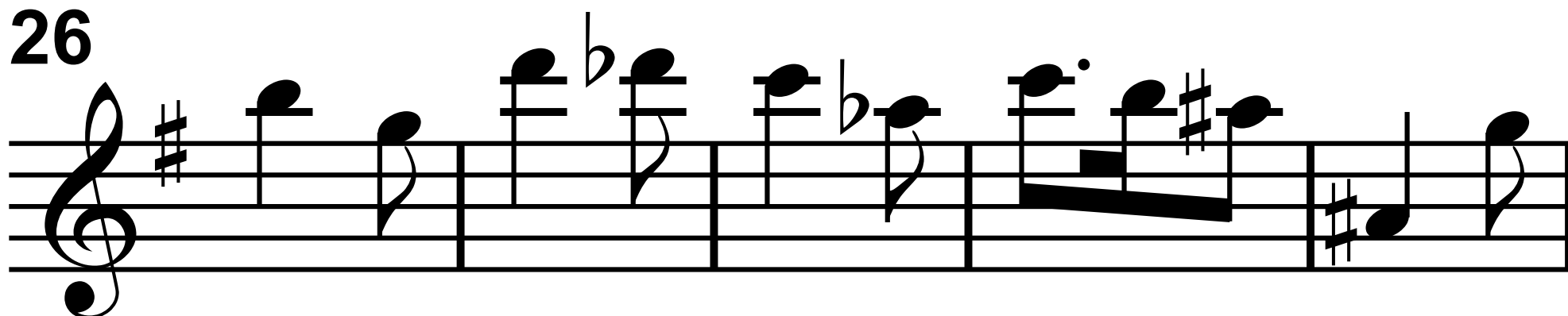
(ci) accompaniment until bar 34?



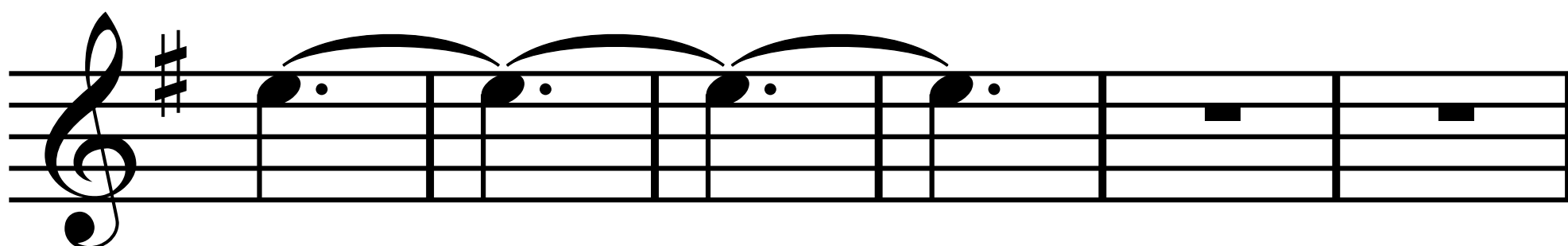
(continued on the next page)

Turn over

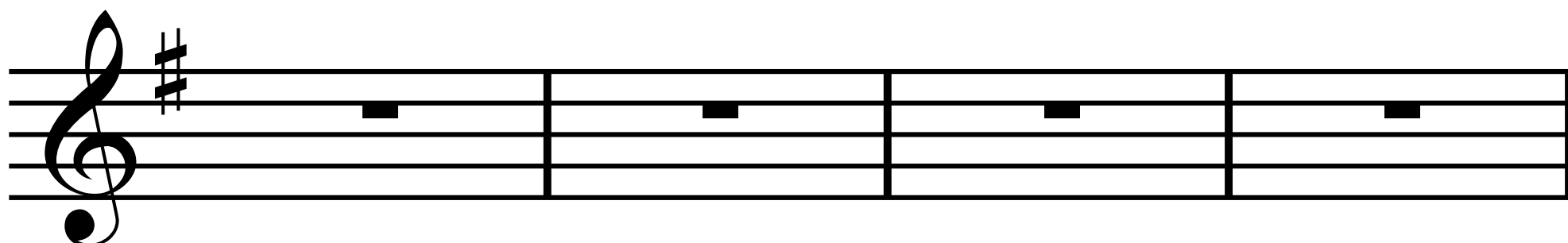
26



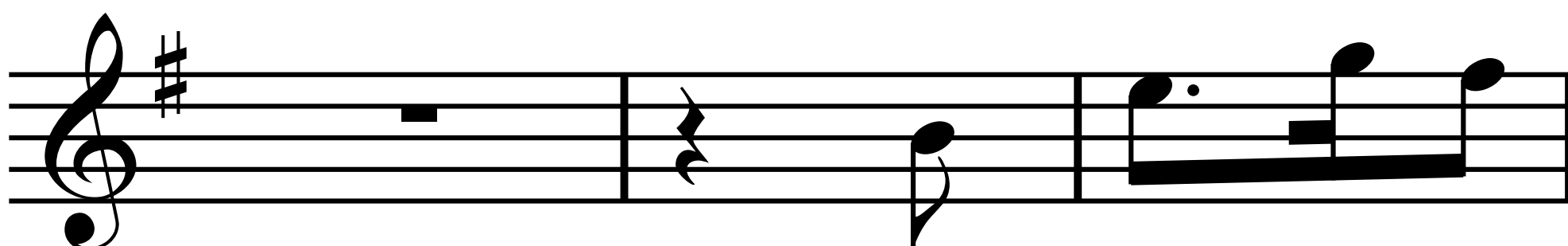
31



37



41 (cii) accompaniment bar 42 until end?



Question 3(a)

| Statement                                | True                     | False                    |
|--|--------------------------|--------------------------|
| A The opening vocal melody is chromatic  | <input type="checkbox"/> | <input type="checkbox"/> |
| B The opening vocal melody is melismatic | <input type="checkbox"/> | <input type="checkbox"/> |

Question 3(c)

|                                       |               |
|---------------------------------------|---------------|
|                                       | <b>Rhythm</b> |
| <b>acoustic bass guitar</b>           |               |
| <b>second accompanying instrument</b> |               |

Question 6(a) – Table

| Location     | Chord                |
|--------------|----------------------|
| Bar 3        | C minor              |
| X            |                      |
| Y            |                      |
| Z            |                      |
| Bar 6 beat 3 | E <sup>b</sup> major |

Question 6(b)

| Similarities | Differences |
|--------------|-------------|
| 1            | 1           |
| 2            | 2           |

Question 7

**Allegretto**

Musical notation for the first system, featuring a treble clef, a key signature of two sharps (F# and C#), and a 4/4 time signature. The notation includes a series of notes and rests, with a final measure containing a fermata.

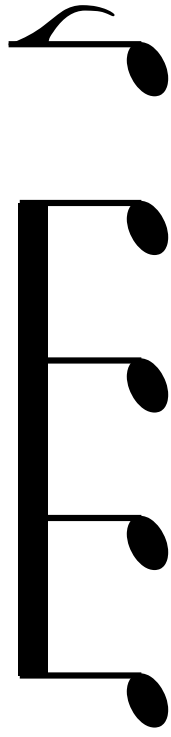
Musical notation for the second system, continuing the piece. It features a treble clef, a key signature of two sharps (F# and C#), and a 4/4 time signature. The notation includes a series of notes and rests, with a final measure containing a fermata.

(continued on the next page)

Turn over

# Question 7 continued.

(a) melody?



(b) rhythm?

